

2017
Jazz
Ensemble
Audition
Music
Trombone

85 6 *mf* TENOR SOLO 3

101 7 (109) (117)

TRP. SOLO 7 (125) 8 (133) 7

A Warm Breeze

141 SOFT ENS.

149 (157)

165

173

EXAMPLE IMPROVISATION

LISTEN AND ANALYZE
(JAZZ DEMO PLAYS 1 CHORUS)



Track 11
JAZZ DEMO

3.C. INSTRUMENTS

EASY SWING

Dmi7

G7

Emi7

A7



Ami7

D7

Abmi7

Db7

C7

B7

Bb7

A7



Dmi7

G7

Emi7

A7



Ami7

D7

Abmi7

Db7

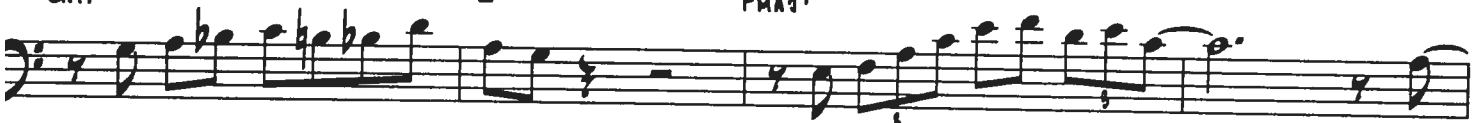
Cmaj7



Gmi7

C7

Fmaj7



Ami7

D7

Dmi7

G7



Dmi7

G7

Emi7

A7



Ami7

D7

Abmi7

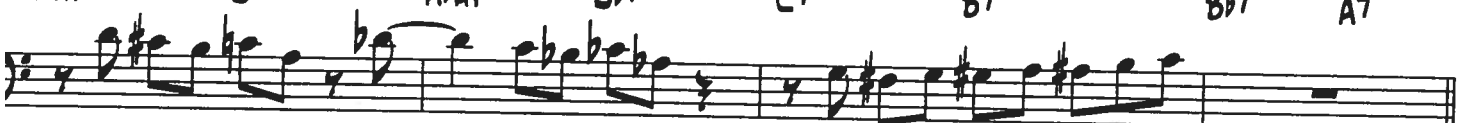
Db7

C7

B7

Bb7

A7



10. Ladybird



PLAY 10 TIMES (♩ = 152)

By Tadd Dameron

SWING

CA F- Bb7

CA Bb- Eb7

AbΔ A- D7

D- G7 CA Eb7 AbΔ Db7 ⊕

SOLOS

CA F- Bb7

CA Bb- Eb7

AbΔ A- D7

D- G7 CA Eb7 AbΔ Db7 ⊕

CA Eb7 AbΔ Db7 CA Eb7 AbΔ Db7 CA+4

Copyright © 1947 (Renewed) by Music Sales Corporation (ASCAP)
 This arrangement Copyright © 1995 by Music Sales Corporation (ASCAP)
 International Copyright Secured. All Rights Reserved. Used by Permission.

2013
Jazz
Ensemble
Audition Music
Bass Trombone

**Bass trombonists will also audition on music listed under “trombone” and will sight-read bass trombone music.*

BASS TROMBONE

WCU BAND
2434

DOLPHIN DANCE

Arranged by
Mike Crotty

FOR AUDITION: meas 1-72 (LETTER E)
meas. 291-302 (LETTER M)

EASY GROOVE (♩=104-108)

1 *mp*

2 *mf*

3

4

5 *mf*

6

7

8 *mp*

9

10

11

12

13

14

15

16

17

18-20

(in stand)

21 *mp*

22

23

24

25

26

27

28

(A)

(B)

29 *mp*

30 *pp*

31

32

IN STAND

OPEN

Bass Bone

33 34 35 36 *mf*

37 38 39 40

41-42 43-46 *mf* 47

48 49 50 51-54

IN STAND 55 56 57 58

59 60 61 62

63 64 OPEN *mp* 65 66 *f*

67 68 69 70

71 72 73 74 *mf*

77 78

Handwritten musical score for Bass Bone, measures 260-302. The score is written on ten staves in a 2/4 time signature. It includes various musical notations such as notes, rests, slurs, and dynamic markings. A circled 'L' is present above measure 261, and a circled 'M' is above measure 290. The key signature changes from one flat to two flats at measure 290. The piece concludes with a double bar line at measure 302.

Measures and markings:

- 260
- 261-264
- 265
- 266
- 267
- 268
- 269
- 270
- 271
- 272
- 273 *f*
- 274
- 275 *f*
- 276
- 277
- 278
- 279
- 280
- 281
- 282
- 283
- 284
- 285
- 286
- 287 *dim*
- 288
- 289
- 290 *M* *dim*
- 291 *mp*
- 292
- 293
- 294
- 295
- 296
- 297 *mp*
- 298
- 299
- 300
- 301
- 302